

IOWA ARCHITECTURAL FOUNDATION ANNUAL REPORT 2022





WHO WE ARE

The Iowa Architectural Foundation is a 501(c)(3) charitable organization founded in 1989 to inspire appreciation for architecture and design in everyone. We pursue our mission through youth and adult education, community design charrettes, and public outreach programs. IAF receives financial support from grants, donations, fundraising events and programs. Although IAF's office is donated by AIA Iowa, we are distinct and separate organizations. A volunteer Board of Trustees, composed of architects, allied professionals and business leaders, governs IAF.

OUR VISION

IAF brings architects, designers, educators, students and architecture enthusiasts together to improve the quality of life in Iowa through architecture and design. IAF programs demonstrate the power of architecture to transform lives and improve the places where we work, live and play.

Iowa Architectural Foundation
400 Locust Street in Capital Square
Des Moines, Iowa 50309
(515) 244-1888
www.iowaarchfoundation.org
director@iowaarchfoundation.org



A LETTER FROM THE CHAIR

To All of IAF Friends & Supporters,

What a year!! 2022 was another year of significant change and growth for the IAF. First, the Board of Trustees and several key volunteers worked through a new 5-year strategic plan that strengthens our organizational structure, focuses our efforts toward education and outreach, and provides a framework for continued success in delivering our wonderful architectural content. This planning effort has set our path forward but still allows for opportunities to adjust as potential educational offerings present themselves.

Second, we bade farewell to Claudia Cackler, our long-time executive director. Claudia decided to slow things down and enjoy some time with family and friends. We wish you the best, Claudia! With Claudia's departure, the IAF began the difficult process of searching for our next director. We knew that the next leader would need to bring our organization to another level as we continued to develop our organizational structure and content. We were blessed to find and bring Laura Porter, our new Executive Director on board! Laura continues to push us forward and keeps our feet well-grounded when needed.

In addition to this planning effort and transition, the IAF continued to expand its offerings through state-wide, online, and in-person efforts. Teaming with an esteemed historian in Cedar Rapids, the IAF helped present several wonderful Louis Sullivan buildings in that city. Also, we launched a new neighborhood for our very successful program Eat, Drink, Architecture. The Drake University neighborhood provided a wonderful new experience for all those in attendance. Rave reviews abounded from this new tour! Once again, the Mid-Century Modern home tours were awesome and sold out every ticket available.

A pillar of the IAF programming, the Community Enhancement Through Architecture Awards Program continued to recognize those individuals and organizations that are making significant impacts through the built environment. This year's recipients, Drake University and Shelter House have significantly invested in serving others through beautiful and functional spaces.

Lastly, the IAF would not be here if it were not for those deeply interested in architecture and its impact on our lives. We are forever grateful to those who attend our events, connect with us online, and provide the much-needed donations, grants, and lasting support that fuels our passion and programs.

Thank you,

A handwritten signature in blue ink, appearing to read "Brian N. Crichton". The signature is fluid and cursive.

Brian N. Crichton, AIA
2022 Board Chair



Cedar Rapids Louis Sullivan Tour

In April 2022, IAF ventured to Cedar Rapids to present a tour of two historic Louis Sullivan buildings, St. Paul's United Methodist Church and The Peoples Savings Bank. Esteemed local historian Mark Stoffer Hunter guided guests through the new 3rd Avenue entrance of St. Paul's Church. Built in 1914, the church and neighboring house, where Sullivan resided while designing the building, offer a window into the architect's life late in his career. Following the church tour, attendees made their way to 3rd Avenue entrance of The People Savings Bank. Built in 1911, the bank is known as the second of a number of small "jewel box" banks in the Midwest designed by Sullivan. Over 70 attendees took part.





Custom Walking Tours

IAF was thrilled to host the Young Professionals Connection once again in September. Firm sponsors RDG, Neumann Monson, and ISG opened their doors and provided refreshments for over 40 attendees. IAF is so appreciative of YPC, the Greater Des Moines Partnership, and sponsoring firms for helping make this annual event a success.

Eat | Drink | Architecture

Eat. Drink. Architecture. returned in 2022 with with the addition of a second Drake neighborhood tour, which offered a progressive brunch along a fresh route curated by IAF's guides. Highlights included historic churches and Drake's renowned campus architecture. Thanks are due to Full Court Press for sponsoring the food and drinks for two tours this year.

Architecture on the Move

IAF welcomed visitors from across Iowa and several out-of-state tourists at our walking tours of Downtown Des Moines, once again sponsored by Kum & Go. Tours were offered on the second Friday of months May through October.





Above: Tim Hickman Residence, 2222 Willowmere

Mid-Century Modern Home Tour

IAF and Iowa Mid-Century Modern revived in-person home tours in June 2022. This year's self-guided tour showcased four outstanding homes in the metro, including three designed by Iowa architects and one iconic Lustron "Home of the Future," all from the 1950s and 60s. The homes included one in Southern Hills, designed by architect Jim Champion, AIA; another near McCrae Park, designed by Amos Emery, AIA; and another designed by Paul Schwartz, who was with the Emery firm. The Lustron home in Beaverdale was a great example of these compact, pre-fabricated, enameled steel homes, developed in response to a housing shortage following World War II. Thanks go to the Iowa Mid-Century Modern Community, who helped in planning and promotion for a 200+ sold-out tour. The slideshow can be seen on IAF's YouTube Channel.



Above: Mike Kreemer Residence, 2240 SW 11th St.



Top: Melissa & Matt Abendroth residence, 3709 Southern Hills Dr.
Bottom: Lustron Home, Damien Thompson residence, 1669 Beaver Ave.



ArchiTreasures

The Ola Babcock Miller Building Rediscovered

ArchiTreasures Principal Financial An Architectural Legacy

ArchiTreasures

IAF created a new video series called ArchiTreasures to fill a need for high-quality virtual content during the pandemic, and to demonstrate the emotional experience of architecture through creative, mysterious stories and gorgeous visuals. The project continued into 2022 with four new film releases. In early 2022 IAF added "Louis Sullivan in Cedar Rapids," "The Catholic Pastoral Center, A Mies Masterpiece in Des Moines," "The Ola Babcock Miller Building Rediscovered," and "Principal Financial Legacy for Des Moines" to its ArchiTreasures film collection, which now totals ten. BRAVO Greater Des Moines, its governmental and community partners, and IAF sponsors made this work possible. IAF hosts this archive of Iowa's finest architectural treasures on its YouTube channel, at no cost to the public, and continues to promote the short-format videos to supplement its other K-12 curriculum.

Above L to R: Catholic Pastoral Center; People's Savings Bank column; Ola Babcock Miller Building; Principal Financial Headquarters

Volunteers

Without our volunteers, none of our work would be possible!

Scott Allen, AIA
William Anderson, FAIA E
Marcello Arunani, Assoc. AIA
Anna Aversing
Peggy Bang
Justine Bangert
Art Baumgartner, AIA
Anna Bednarko, Assoc. AIA
Jason Bird
Robert Bisenius, AIA
Scott Borcharding
Josh Braby
Ben Brown
Kayla Brown
Tim Bungert, AIA
Gina Burress
Matthew Coen, AIA
Brian Crichton, AIA
Michelle Cunliffe, AIA
Austin Cunliffe
Ric D'Amico
Brad Davison-Ripped, AIA
Joyce Deike
Shelby Doyle, AIA
Ryan Ellsworth, AIA
Scotney Fenton, AIA
Meaghan Foshe
Ray Fredregill
Suzie Fredregill
Nathan Griffith, AIA
Mark Hadaway, Assoc. AIA
Donna Hallstrom
John Hallstrom
Stacey Hanley, AIA, ASLA
Tonia Householder, AIA
Linh Huynh, Assoc. AIA
Jennifer James
Susan Judkins
Karl Kaufman, AIA
Shayama Khan, Assoc. AIA
Matthew Larson
Anna Lukens, Assoc. AIA
Zach Mahoney
Eric Maguire, AIA
Diane McDonald, Assoc. AIA
Kristin McHugh-Johnston
Pat Mescher

Joshua Miltenberger
Sam Moeller
Paula Mohr
Anna Nelson
Suzet Nelson
Kelli Paskert
Laura Pavone
Jimi Peters
Joan Platz
Tim Platz
Diane Rasmussen
Tina Rhodes, Assoc. AIA
Jeff Rhodes
Cristina Rodriguez
M. Jessica Rowe
Kyle Sandage, AIA
Don Scandrett
John Schmacker
Barb Schmidt, Hon. AIA
Mark Schmidt, AIA
Anne Schmit
Gary Schmit
Michael Schreiber
Vinoth Sekar
Jeff Shaffer, AIA
Edward Shannon, AIA
Caitlin Sheeder
Curt Small
Edd Soenke, AIA
Hugh Soward
Anna Squier
Stephen Stimmel, AIA
Lauren Stokes, Assoc. AIA
Nolan Sullivan, Assoc. AIA
Laura Sweet
Mike Sweet
Nick Tarpey
Aranda Thompson
Kylee Trimble
Tim Veatch, AIA
Todd VonStein
Brian Warthen, AIA
Heidi Wessels
Rob Whitehead, FAIA
Tom Wollan, AIA

ARCHITECTURE IN THE SCHOOLS



"Architective" Scavenger Hunt Tours

In May, IAF volunteers led nearly 150 students on tours of downtown Des Moines as part of our Architecture in the Schools program. These interactive tours are a unique educational opportunity for grades 3rd and above, allowing students to not only experience urban architecture up close, but also to recognize different features and acquire new vocabulary for understanding the built environment. Our partner schools this year, St. Francis of Assisi and Nodaway Valley, have bussed students for this spring field trip for the last several years.

For the first time, IAF also hosted Central Academy high school exchange students from Denmark. Guides led 30 visitors from downtown Des Moines to Western Gateway Park.





COMMUNITY ENHANCEMENT THROUGH ARCHITECTURE AND DESIGN AWARDS



IAF Recognizes Drake University and Shelter House

The Iowa Architectural Foundation honored two outstanding nominees, Shelter House (Iowa City) and Drake University (Des Moines), with Community Enhancement through Architecture and Design Awards. This award recognizes those individuals, organizations, agencies, or communities, outside the architectural profession, who have demonstrated consistent and effective leadership, vision, and support for architecture, or have repeatedly championed the cause of architecture or acted as a benefactor of architecture and urban design. Founded in 1983, **Shelter House** today operates a 70-bed emergency shelter, in addition to four homes and a housing-first complex through which they provide over 60 permanent supportive housing units. Amid its growth over the last four decades, Shelter House has consistently incorporated high standards of design into its model for combating homelessness, demonstrating how thoughtful design can support day-to-day social services as well as the dignity and health of tenants. **Drake University** earned the award due to its past and ongoing investment in exceptional campus architecture. The university has undertaken extensive efforts to restore and preserve its modern masterpieces, now over 50-60 years old. More recently, Drake added the Tom and Ruth Harkin Center, which sets a new standard for universal and inclusive design.



Photo credits: "Cross Park Place," Neumann Monson Architects; "Cross Park Place," Cameron Campbell, Integrated Studios; "Meredith Hall," Drake University Archives & Special Collections; "Harkin Institute," Kelly Callewaert

Iowa Architectural Foundation 2022 Board of Trustees

EXECUTIVE OFFICERS

Chair
Brian Crichton, AIA
CMBA Architects

Joshua Miltenberger
Greiner Construction

Vice Chair
Nathan Griffith, AIA
Neumann Monson Architects

EX-OFFICIO

AIC Committee Chair
Tom Wollan, AIA
FRK Architects & Engineers

Treasurer
John Schmacker

AIS Committee Chair
Stacey Hanley, AIA, ASLA
Genus Landscape Architects

Secretary
Diane Rasmussen
Pigott

CDP Committee Co-Chair
Edd Soenke, AIA
The Design Partnership

Past Chair
Jeff Shaffer, AIA
BNIM Architects

AIA Iowa Representative
Dan Drendel, AIA
Slingshot Architecture

TRUSTEES

William Anderson, FAIA E
WA Architecture

AIA Iowa Executive Director
Jessica Reinert, Hon. AIA
AIA Iowa

Justine Bangert
Bangert, Inc.

IAF EXECUTIVE DIRECTOR

Josh M. Braby
Neumann Brothers, Inc.

Claudia Cackler (Jan.-Aug. 2022)

Ric D'Amico
The Belaire Group

Laura Porter (Aug.-Dec. 2022)

Ryan Ellsworth, AIA
Estes Construction

Scotney Fenton, AIA
RDG Planning & Design

Linh Huynh, Assoc. AIA
Neumann Monson Architects



Every effort has been made to list all of our contributors accurately. We apologize in advance for any omissions and errors. Please contact IAF with corrections. We are grateful to all who made donations, sponsored or made in-kind contributions between January 1, 2021 and December 31, 2022.

\$5,000 and above

American Institute of Architects, Iowa Chapter

BRAVO Greater Des Moines and its Government Partners, including the cities of Altoona, Ankeny, Bondurant, Carlisle, Clive, Des Moines, Grimes, Indianola, Johnston, Norwalk, Pleasant Hill, Polk City, Urbandale, Waukee, West Des Moines, Windsor Heights; and Polk County; and Cultural Partners including Capital Crossroads, Community Foundation of Greater Des Moines, Des Moines Metropolitan Planning Organization, Greater Des Moines Convention and Visitors Bureau, Greater Des Moines Partnership, Iowa Arts Council, Iowa Department of Cultural Affairs and The Tomorrow Plan.

Invision Architecture

Iowa Mid-Century Modern

Continued page 13

Pictured above: Architecture enthusiasts watching the launch of ArchiTreasures at Capital Square

\$2,500 - 4,999

CMBA Architects
Kum & Go
Kristin McHugh-Johnston
Shive-Hattery Architecture + Engineering

\$1,000 – \$2,499

Allers Associates Architects
Ask Studio
Gary Bechtel
Josh Braby
Graham Construction
IMEG Corporation
Johnson Machine Works
Neumann Brothers
Neumann Monson, PC
OPN Architects
Pigott, Inc
Raker Rhodes Engineering
RDG Planning & Design
Rypma Properties
Skold Companies
Pat and Thomas Wollan, AIA

\$500 – \$999

David Anneberg, AIA Emeritus
The Design Partnership
Kersten Gebard
Greiner Construction
Mohawk Group
Kevin Monson, AIA
John Schmacker
Studio AU
SVPA Architects

\$250 – \$499

FRK Architects + Engineers, PC
Matthew Cole, AIA
Marsha K Ellsworth
FEH Associates
Lori & Philip Hodgins, AIA
Levi Architecture
William Menner
Kevin Nordmeyer, AIA
Scott Olson, AIA
Diane Rasmussen
Rinderknecht

\$100 – \$249

Jeff Anderzhon, FAIA
Eric Beron, AIA
Michael Broshar, FAIA Emeritus
Ric D'Amico
Scotney Fenton, AIA
Ben Godar
Corinne Goode, AIA
Steven Gray, AIA
Nathan Griffith, AIA
Brent Hoffman, Assoc. AIA
Paul Klein, AIA Emeritus
Craig M Nelson, AIA Emeritus
Matt Ostanik, AIA
Matthew Perkins
John Schmidt & Deb Wiley
J. Mark & Barbara Schmidt
Ron Schulz
Suzanne Schwengels, Hon. AIA
Dane Shelton, AIA Emeritus
Becky & Rod Stevens, AIA
Stephen Stimmel, AIA Emeritus
Jack Topp, AIA
Thomas J. Mohr Charitable Fund

Continued page 14

Continued

\$1 – \$99

Jason Bird
Community Foundation of Greater Des Moines
Michael Farley & Mary Timp
Julia Gauthier
Elizabeth Goll
James Grisolano
David Hofmann, AIA
Heather Imoehl
Tracy Levine
Sam Moeller
Clare Smith-Larson
Chris Snider
Alexander Umimoto
Timothy Vaughn, AIA
Kari Winkler, AIA Emeritus



IMPACT ENDOWMENT

ESTABLISHED BY



Iowa

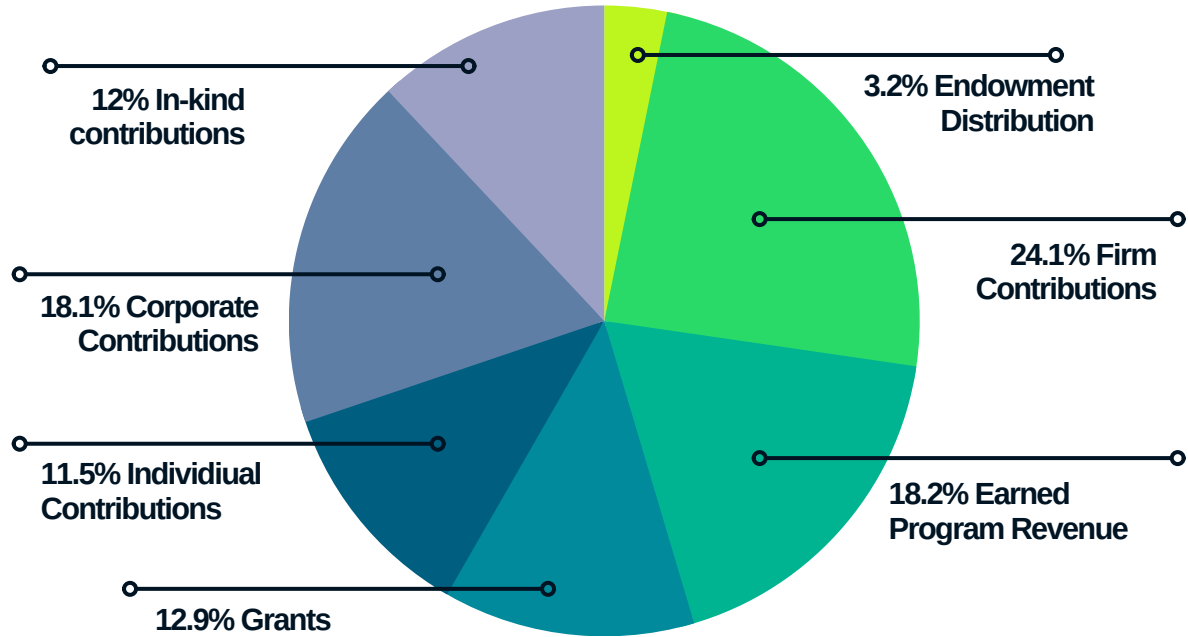
A Chapter of The American
Institute of Architects

The American Institute of Architects, Iowa Chapter (AIA Iowa) recently established the Impact Endowment to benefit the Iowa Architectural Foundation (IAF). An initial gift of \$50,000 provides a steady financial resource for the IAF's programs and events that inspire public appreciation for architecture and design. This support furthers AIA Iowa's mission of promoting the value of good design and advocating for the health and safety of the public.

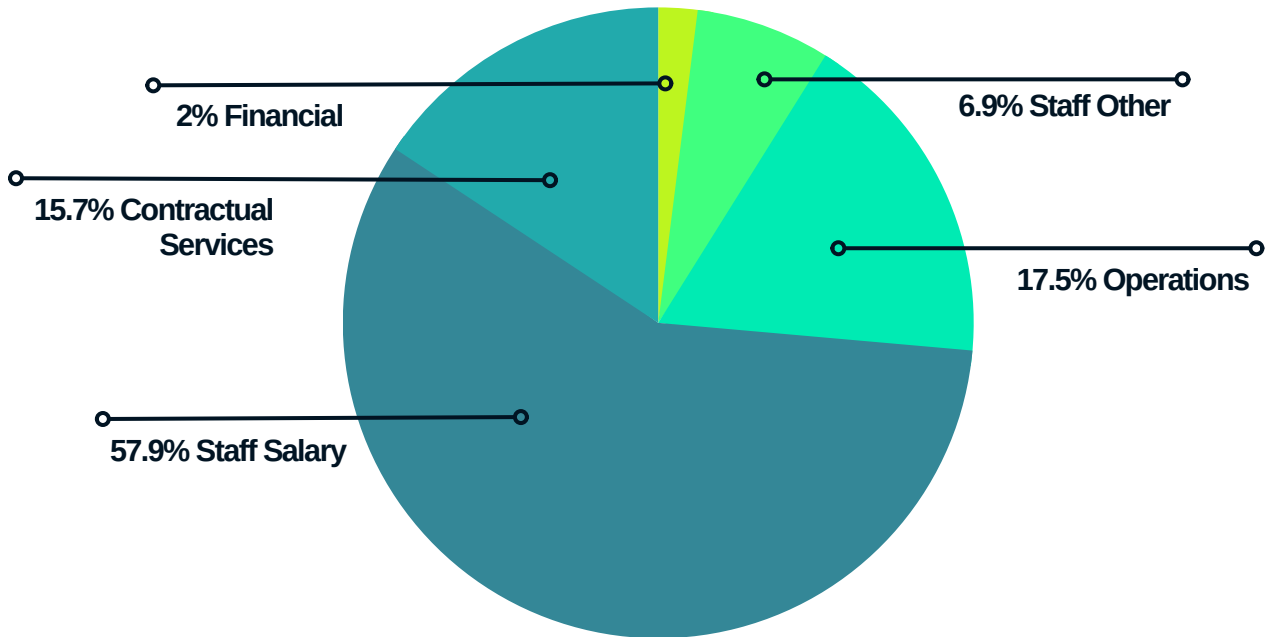
The IMPACT Endowment was made possible by the extraordinary support for AIA Iowa by its members and those allied to the profession of architecture over the past 115 years, as well as a culmination of efforts from volunteers and staff related to the programming and services that the Chapter provides.

As a 501 (c) (3) organization, we hope other donors will contribute to the endowment so IAF may continue to increase public understanding of this most public art. Individuals or businesses interested in making a gift to the endowment should contact the Community Foundation of Greater Des Moines, which is managing the sustainable endowment. All gifts will be eligible for the Endow Iowa Tax Credit. Annual distributions of 5% of the endowment will be made to IAF and distributed indefinitely.

2022 Revenue



2022 Expenses



2022 Impact by the Numbers

	17 Expertly Curated Tour Routes Shared with the Public
	60 Volunteer-Led Architectural Tours
	750 Volunteer hours
	965 Students and Adults Reached In Person
	16,000+ Views Worldwide
	17,667 Total Individuals Reached



Iowa Architectural Foundation
400 Locust Street
Des Moines, IA 50309
www.iowaarchfoundation.org
(515)244-1888
director@iowaarchfoundation.org